



33 Duffus Crescent | Elgin | Moray | IV30 5PY

www.cclproperty.com

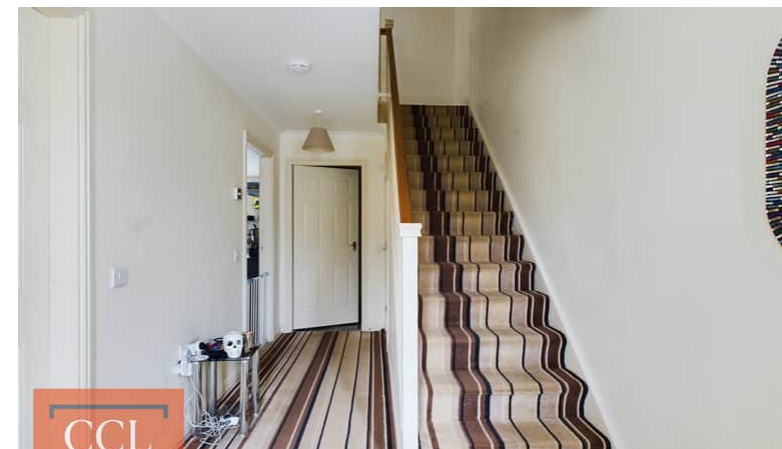
33 Duffus Crescent, Elgin, Moray, IV30 5PY

- 4 bedroom detached house
- Living Room
- Dining Kitchen & Utility Room
- Sun Room
- Main Bedroom with En-Suite
- 3 Further Bedrooms
- Bathroom & Shower Room
- Driveway & Garage
- Gas central Heating & Double Glazing
- Garden to front & Rear

Summary

CCL Property are delighted to offer this desirable four bedroom detached "smart" home with garage in the popular area of Bishopmill in Elgin. The property has good accommodation to make a delightful family home, benefiting from GCH and DG. Spanning two floors the property comprises of entrance hallway, Living Room, Shower Room, Dining Kitchen, Utility room, Sun Room, main bedroom with en-suite shower room, 3 further bedrooms and a family bathroom. Enclosed rear garden and to the front an area of grass with borders and driveway leading to the garage. There are numerous cctv and wifi cameras around the property which can remain. The property is also a smart home and has hive heating, programmable sensors, wi-fi lights with mood control (different colours), and indoor cameras/plugs that can be programmed to do things like put kettle on when motion is detected in hallway or lights put on at different times etc.

In the popular Bishopmill area, to the North West of Elgin, the property is ideally located to offer a pleasant setting. The area benefits from views over Elgin and the surrounding countryside, with easy access to Quarrel Wood and country walks. The thriving market town of Elgin is regarded as the commercial and administrative capital of Moray and is home to a vast array of amenities and facilities and is home to the Moray College UHI, two secondary schools and further benefits from a number of retail, sport and leisure facilities. From the Cairngorm Mountain range to the nearby sandy beaches the county of Moray offers some truly exceptional and varied scenery. The town and its surrounding area are steeped in history and benefit from a pleasing climate throughout the year. Elgin is extremely well served through various





Property

Modern four bedroom detached family home has good accommodation spanning two floors. The house is fully updated with smart living and hive heating. Enclosed garden to the rear, garage and private parking. Gas central Heating and double glazing. All carpets and floor coverings and blinds are to be included in the sale.

Accommodation:

Entrance Hallway:

External door provides access to the hallway, which has staircase leading to the upper floor, with under stair storage cupboard, doors to the Shower room, Living Room and kitchen.

Shower room:

A spacious shower room fitted with a white two piece suite comprising, WC, wash hand basin and a separate shower cabinet with screen door.

Living Room:

Double doors from the hallway lead to the comfortable spacious room with large picture window overlooking the front garden. Further double doors lead to the dining kitchen.

Kitchen:

A well appointed kitchen fitted with a good range of wall and base units in grey with matching work tops, incorporating a sink and drainer with white tile splash back. Integral 5 ring gas hob, double oven and chimney style extractor hood. Ample space for dining table and chairs. Double doors to the sun room and door to Utility Room.

Utility Room:

Situated off the kitchen, fitted with same units as the kitchen, incorporating a sink and drainer, has plumbing for washing machine and tumble drier, also has door to the garden.

Sun Room:

Lovely room situated to the rear of the property overlooking the garden, again with doors leading out to the garden. There is a top of the range massage chairs which can also be included, link attached <https://sasaki.co.uk/>

Upper Landing:

Carpeted staircase leads to the upper landing which provides access to all rooms and has a storage cupboard and access hatch to the loft which is partly boarded for storage.

Main Bedroom:

A spacious double bedroom with picture window to the front. Two double wardrobes providing ample hanging and shelf space. Door to the En-suite.

En-Suite Shower room:

Fitted with white WC, wash hand basin and double size shower cabinet, with mains shower installed and white aqua panels and glazed screen doors. Wall mounted mirror, vanity shelf and medicine cabinet with shelving.

Bedroom 2:

A second double bedroom, situated to the rear and has double wardrobe providing hanging and shelf space. Ample space for free standing furniture.

Bedroom 3:

Third bedroom again, to the rear with ample space for free standing furniture.

Bedroom 4:

Fourth bedroom to the front, with built-in storage cupboard.

Bathroom:

Fitted with a 3 piece white suite, comprising WC, wash hand basin and bath with over bath shower fitted with glazed screen and black tiling. Wall mounted mirror, vanity shelf and shaver point.

External

Lock block and gravel driveway to the front, which provides private parking and leads to the garage which has up and over door with light and power installed. The rear garden is fully enclosed with a high wooden fence, has a patio area and a wooden shed, a summer house and an area laid in artificial turf.

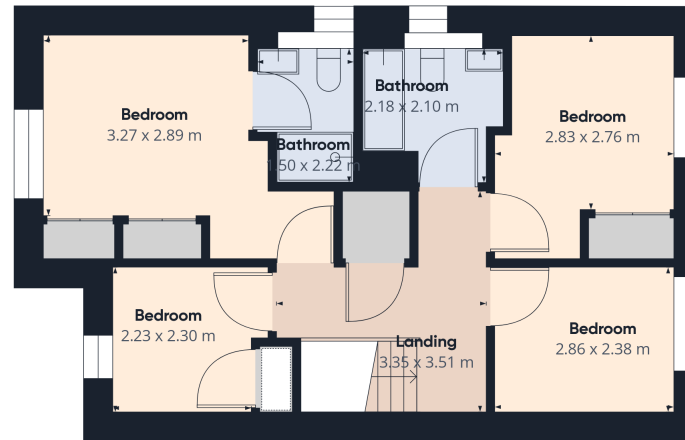
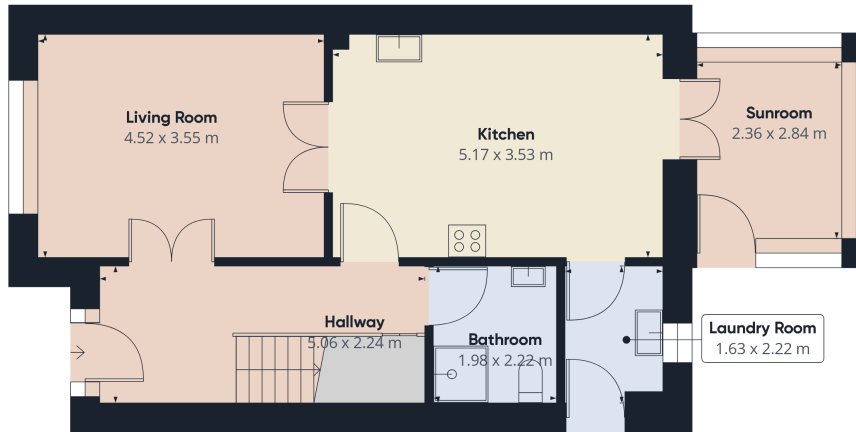
Summer House:

Wooden summer house which has been fully boarded with insulation, has its own separate electric supply with circuit breaker. With a good wi-fi signal, would be ideal as a home office or games room.







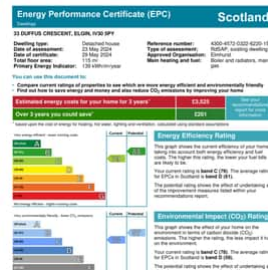


Approximate total area⁽¹⁾
113.14 m²

(1) Excluding balconies and terraces

While every attempt has been made to ensure accuracy, all measurements are approximate, not to scale. This floor plan is for illustrative purposes only.

GIRAFFE360



All appointments to view this or any of our other properties must be made through the vendors sole agents:

CCL Property

62 High Street, Elgin, Moray, IV30 1BU

T: 01343 610520

www.cclproperty.com

Important: We would like to inform prospective purchasers that these sales particulars have been prepared as a general guide only. A detailed survey has not been carried out, nor services, appliances and fittings tested. Room sizes should not be relied upon for furnishing purposes and are approximate. If floor plans are included, they are for guidance only and illustration purposes only and may not be to scale. If there are any important matters likely to affect your decision to buy, please contact us before viewing the property. All offers should be in writing to CCL Property with whom the purchasers should register their interest if they wish to be advised of a closing date.