



CCL



CCL

CCL Property are delighted to offer the opportunity to acquire a generous sized building plot in the rural countryside close to Glenallachie. Set in a beautiful location surrounded by stunning countryside there is full planning permission for the erection of a 4 bedroom house with double garage. All services are connected close by. Subject to planning approval, the house design could be changed to suit the individual. The plot is in an idyllic country location, but within easy access of many towns all amenities.

- Building Plot of half an acre
- Planning for 4 Bedroom House
- Fantastic location
- Stunning Views
- Generous size plot
- Services close by



CCL

T: 01343 610520

www.cclproperty.com

Plot Bush Farm | Aberlour | Moray | AB38 9NA

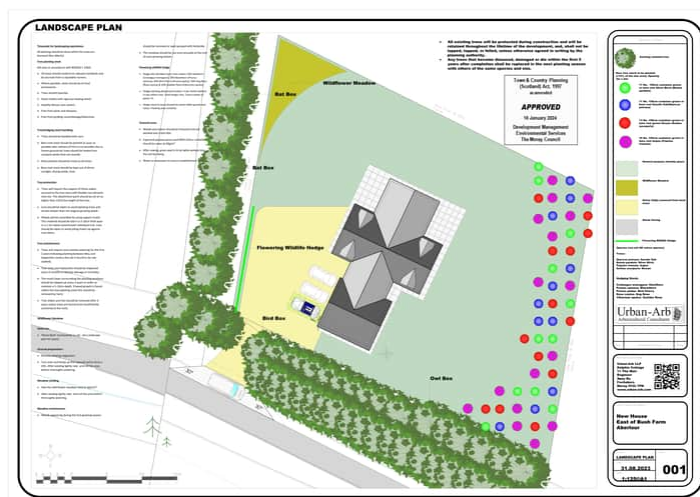
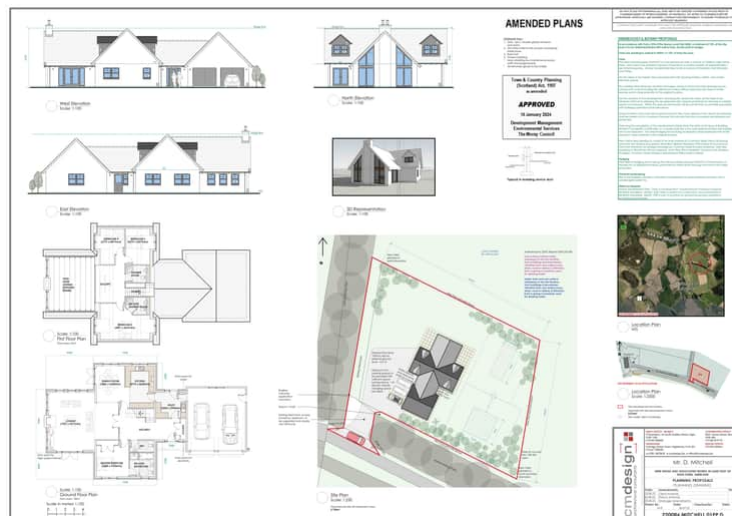
Offers Over £85,000 Freehold

Situation

The plot is situated in a beautiful country location, between Glenallachie and Edinville, close to Aberlour, Moray. Where there are many local amenities including a range of local shops, a post office, hotels, restaurants and primary and secondary schools with more extensive facilities such as superstores, leisure centre and schools found in Elgin 15 miles away. Aberlour also offers many opportunities for outdoor activities such as walking, cycling, climbing and skiing, with Aviemore and the Cairngorm Mountains located just 35 miles south.

Property

Building plot with planning to erect a two storey, 4 bedroom house set in idyllic countryside. The generous sized plot is around 1/2 an acre. All services are available close by. We have attached details of the plans for the house. Further land can be purchased by separate negotiation if a larger plot is required.



CCL Property

62 High Street, Elgin, Moray, IV30 1BU

T: 01343 610520

www.cclproperty.com



IMPORTANT: we would like to inform prospective purchasers that these sales particulars have been prepared as a general guide only. A detailed survey has not been carried out, nor the services, appliances and fittings tested. Room sizes should not be relied upon for furnishing purposes and are approximate. If floor plans are included, they are for guidance only and illustration purposes only and may not be to scale. If there are any important matters likely to affect your decision to buy, please contact us before viewing the property.